

# Knitting Patterns for Handknit "Folk Dolls"

*Knitting Instructions for the Adult Doll and Outfit*

## ***Meet "Bo Weaver"***

14-inch ( 35cm ) Handknit Doll



***With a 5 Piece Outfit  
Hat, Hair, Shirt, Overalls  
and Shoes***

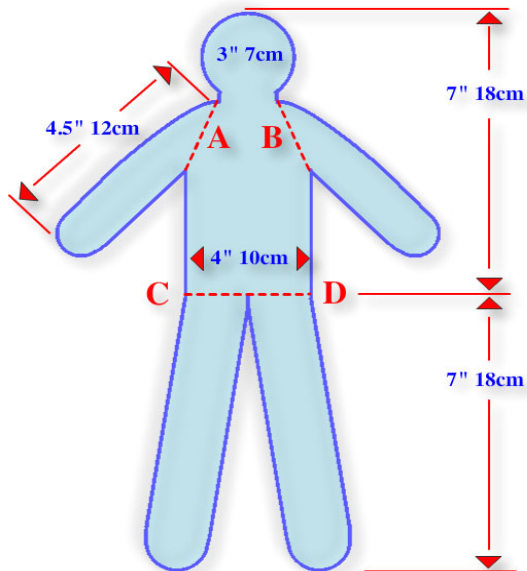
Copyright Folk Knits 2022

## Meet "Bo Weaver"

14-inch ( 35cm ) Handknit Doll



With a 5 Piece Outfit  
Hat, Hair, Shirt, Overalls  
and Shoes



### PATTERN NOTES:

The unclothed folk doll is knit in worsted yarn in 6 pieces: the head/body is knit flat twice, while the arms and legs are worked in the round. The pieces are then stuffed, then sewn together at seam lines ( see diagram ). The mouth is embroidered. Buttons are used for the eyes. Garment patterns are included.

### SKILLS REQUIRED:

Cast on, bind off, decreasing, increasing, seaming, thumb CO, knitting in the round

**SPECIAL TECHNIQUES:** BO without yarn- K up to last 2 sts, pull left st over right st, slip one st from right to left needle, pull left st over right st, repeat until 3 sts have been bound off.

### YARN:

Red Heart #4 Worsted (100% acrylic, 364 yds/333 m, 7 oz /198 g), less than 1 skein or 80 yds/72 m ( Choose your own colors. )

### KNITTING NEEDLES:

US 6 (4mm) circular needle for working flat

US 6 (4mm) set of 4 DPNs for working in the round

### EXTRAS:

Notions: 2 snap sets, two 1/4" ( 5mm ) buttons for overalls, two 3/16" ( 4mm ) buttons for eyes, embroidery floss for mouth, embroidery floss for shoelaces

Tools: Yarn needle, stitch holder

### GAUGE:

Not important. All measurements are approximate.

### ABBREVIATIONS:

**BO** — bind off

**cm** — centimeter

**CO** — cast on

**DPN** — double point needle

**k** — knit

**KFB** — knit into front and back of next st.

**k2tog** — knit two sts together

**k3tog** — knit three sts together

**mm** — millimeter

**p** — purl

**p2tog** — purl 2 sts together

**PU** — pick up

**rnd** — round

**RS** — right side

**ssk** — slip next 2 sts as if to k, then k2tog through the back loop

**st(s)** — stitch (es)

**St st** — stockinette stitch (knit RS rows, purl WS rows )

**WS** — wrong side

**[ ]** — repeat the instructions inside the brackets the number of times specified

## Body and head. Worked flat and seamed. Make 2.

With circular needle, CO 18 sts.

Row 1 ( RS ): K across.

Row 2 ( WS ): P across.

Rows 3-20: Work in St st.

## 6 Y[ ]b'g\ ci `XYfg'UbX\ YUX"

Row 21 ( RS ): SG[ \* É FI ÉskÉZFI Á•Á

Row 22: P across.

Row 23: SG[ \* É FGAÉskÉZFI Á•Á

Row 24: P across.

Row 25: K2tog, k10, ssk. ( 12 sts )

Row 26: P across.

Row 27: K2tog, k8, ssk. ( 10 sts )

Row 28: P across.

Row 29: K across.

Row 30: P across.

Row 31: KFB, k8, KFB. ( 12 sts )

Row 32: P across.

Row 33: KFB, k10, KFB. ( 14 sts )

Rows 34-38: Work in St st.

Row 39: K2tog, k10, ssk. ( 12 sts )

Row 40: P across.

Row 41: K2tog, k8, ssk. ( 10 sts )

Row 42: P across.

Row 43: BO 3, k to last 2 sts, BO 3 without yarn ( see Special Techniques ).

Row 44: BO 4. Cut 12-inch ( 30-cm ) yarn tail, pulling through last st.

## Arm. Worked in the round. Make 2.

With DPNs, CO 15 sts. Distribute 5 sts on each of 3 needles. Join rnd without twisting sts.

Rnds 1-20: K around.

Rnd 21: On needles #1, #2, #3: k2, k2tog, k1. ( 12 sts )

Rnds 22-23: K around.

Rnd 24: On needle #1: k4. On needle #2: k1, KFB, KFB, k1. On needle #3: k4. ( 14 sts )

Rnd 25: K around.

## Arm ( continued ).

Rnd 26: On needle #1: k4. On needle #2: k2, KFB, KFB, k2. On needle #3: k4. ( 16 sts )

Rnd 27: On needle #1: k4. On needle #2: [ k2tog ] 4 times. On needle #3: k4. ( 12 sts )

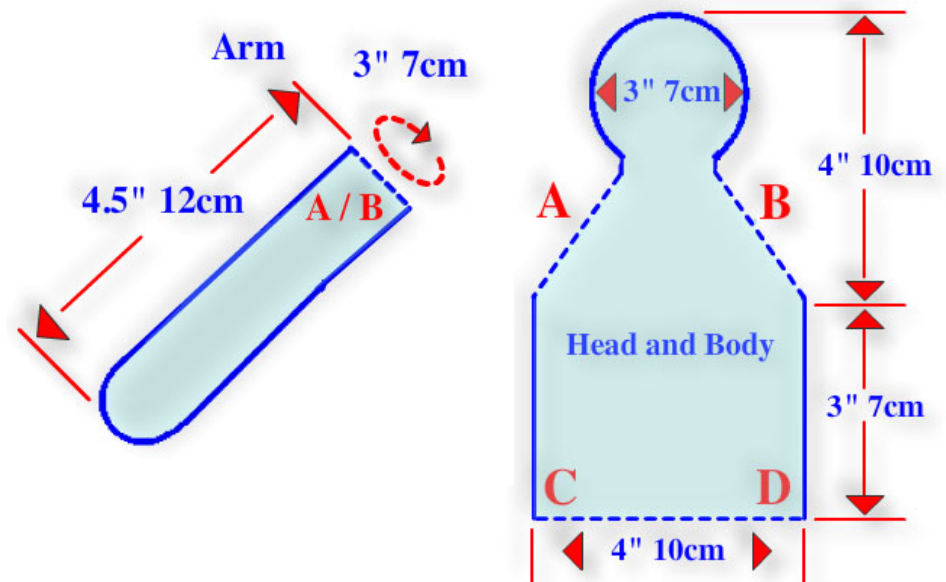
Rnd 28: K around.

Rnd 29: On needles #1, #2, #3: k1, k2tog, k1. ( 9 sts )

Rnd 30: K around.

Rnd 31: On needles #1, #2, #3: k3tog. ( 3 sts )

Cut yarn tail, run through live sts. Pull up and fasten.



( Measurements are approximate. )

\* Finishing Instructions for the adult folk doll, "Bo Weaver", on page 5.

## Leg. Worked in the round. Make 2.

With DPNs, CO 18 sts. Distribute 4 sts on needle #1, 10 sts on needle #2 and 4 sts on needle #3. Join rnd without twisting sts.

**Rnds 1-6:** K around.

**Rnd 7:** On needle #1: k4. On needle #2: k4, k2tog, k4. On needle #3: k4. ( 17 sts )

**Rnds 8-13:** K around.

**Rnd 14:** On needle #1: k4. On needle #2: k4, k2tog, k3. On needle #3: k4. ( 16 sts )

**Rnds 15-21:** K around.

**Rnd 22:** On needle #1: k4. On needle #2: k3, k2tog, k3. On needle #3: k4. ( 15 sts )

**Rnds 23-29:** K around.

**Rnd 30:** On needle #1: k4. On needle #2: k3, k2tog, k2. On needle #3: k4. ( 14 sts )

**Rnds 31-36:** K around.

**Rnd 37:** On needle #1: k4. On needle #2: k2, k2tog, k2. On needle #3: k4. ( 13 sts )

**Rnds 38-43:** K around.

**Rnd 44:** On needle #1: k4. On needle #2: k2, k2tog, k1. On needle #3: k4. ( 12 sts )

**Rnd 45:** Knit and redistribute sts. On needle #1: k3 sts. On needle #2: k6 sts. On needle #3: k3 sts. Continue with needle #3, knit across needle #1 ( 6 sts on needle #3 ). Hold aside needle #2 ( 6 sts ), work back and forth on the combined 6 sts of needles #1 and #3 to make heel flap.

## Heel flap.

**Fck g`%):** Work in St st (K the RS rows, P the WS rows).

**Fck `\*:** K1, k2tog, ssk, k1. ( 4 sts )

## Begin ankle gussets and foot.

PU 4 sts along side edge of heel flap with heel needle ( needle #1 ). ( Needle #1 temporarily holds 8 sts. ) On needle #2: k across instep ( 6 sts ). On needle #3: PU 4 sts from heel-side edge, then k2 sts from needle #1. ( Needles #1, #2, & #3 have 6 sts each. 18 sts total.)

## Ankle gussets and foot ( continued ).

**FbX`(\*:** K around.

**FbX`(+:** On needle #1: k4, k2tog. On needle #2: k6. On needle #3: ssk, k4. ( 16 sts )

**FbX`(:** K around.

**FbX`(-:** On needle #1: k3, k2tog. On needle #2: k6. On needle #3: ssk, k3. ( 14 sts )

**FbX`\$:** K around.

**FbX`)%:** On needle #1: k2, k2tog. On needle #2: k6. On needle #3: ssk, k2. ( 12 sts )

**FbXg`&)):** K around.

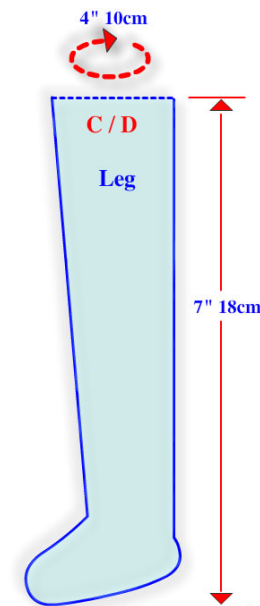
## Begin toe decreases.

**FbX`)\*:** On needle #1: k1, k2tog. On needle #2: ssk, k2, k2tog. On needle #3: ssk, k1. ( 8 sts )

**FbX`)+:** K around.

**FbX`),:** On needle #1: k2tog. On needle #2: ssk, k2tog. On needle #3: ssk. ( 4 sts )

Cut yarn tail and run through live stitches. Pull up and fasten.



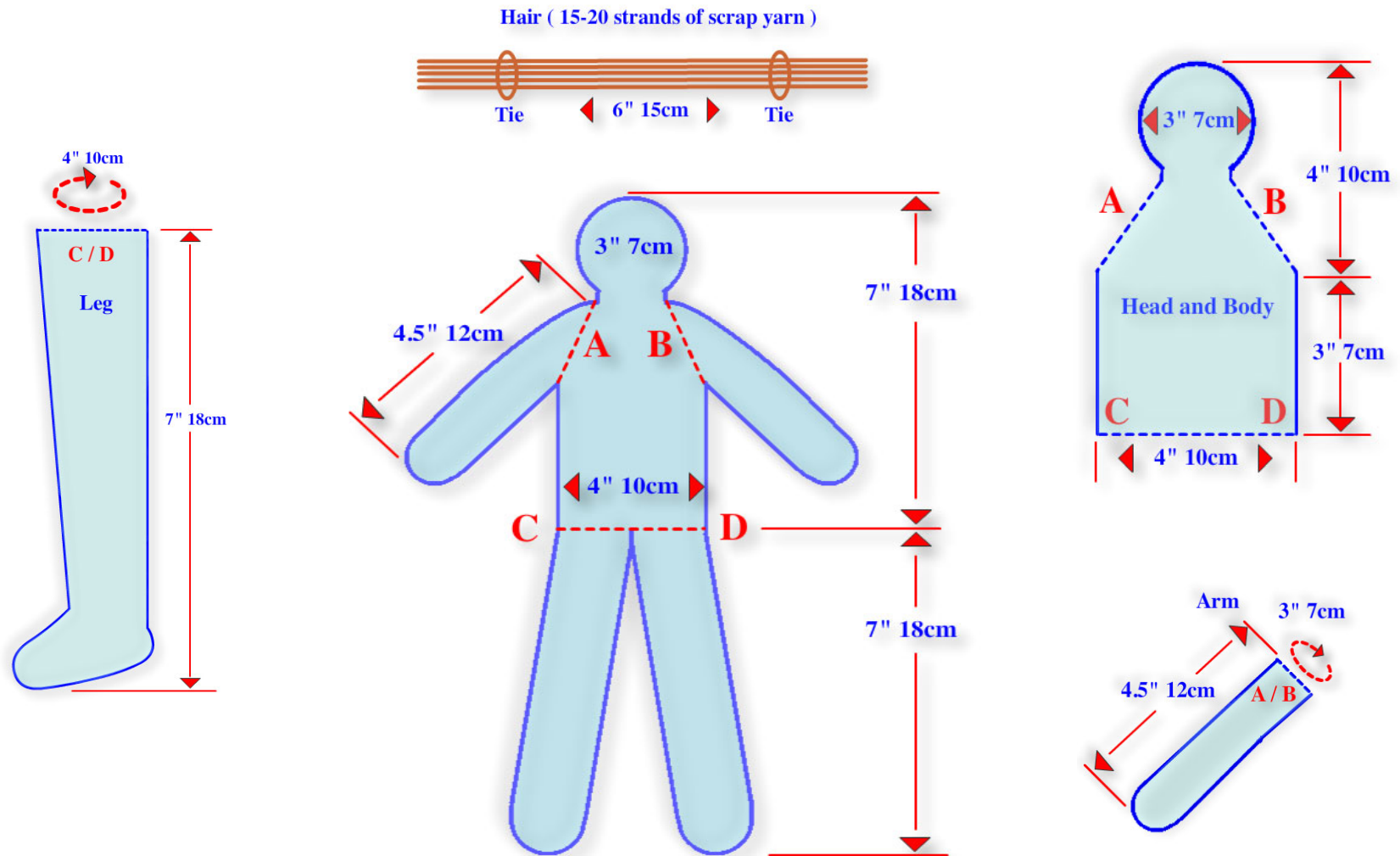
( Measurements are approximate.)

\* Finishing Instructions for the adult folk doll, "Bo Weaver", on page 5.

# Knitting Instructions for Bo Weaver ( continued )

## Finishing

**Head and Body:** Placing RS together, sew body and head pieces together. Leave openings at shoulders and hips ( bottom ) for the insertion of arms and legs. Stuff body and head, arms and legs with PolyFill. **Arms:** Insert arms into shoulder openings so that arms hang with the hands facing forward. Sew in place with yarn tails. **Legs:** Insert legs into the body at the bottom opening ( hips ) with the feet facing forward. Sew in place with yarn tails. **Face:** Embroider the mouth and add buttons for eyes ( 3/16 inch, 4 mm ). **Hair:** Cut 15 to 20 6-inch ( 15-cm ) strands. Hold the strands together. Tie and tighten 3-inch ( 7-cm ) scrap at 1.5 inches ( 4 cms ) from both ends of the strands. Trim scrap ends. Attaching the hair is optional. ( I use the hat to hold the hair in place. )



( Measurements are approximate. )

## Bib. Worked flat.

With 2 DPNs, CO 10 sts.

Row 1 ( RS ): K across.

Row 2 ( WS ): K across.

Row 3 ( RS ): K across.

Row 4 ( WS ): K2, p6, k2.

Repeat rows 3 and 4 four more times. End with WS row #12. Begin working in the round. Place marker for beginning of round. On the working needle, thumb CO 14 sts. Turn to right side. On needle #1, p across the 14 CO sts. On needle #2, p across the 10 bib sts, thumb CO 14 sts. Slip the 14 CO sts to needle #3. Join needle #3 to needle #1. ( Needle #1 has 14 sts, needle #2 has 10 sts, needle #3 has 14 sts. 38 sts total.)

## Hips. Worked in the round.

Rnd 1 ( RS ): P around. ( 38 sts )

Rnds 2-7: K around.

Rnd 8: On needle #1: k9, KFB, k4. On needle #2: k10. On needle #3: k4, KFB, k9. ( 40 sts )

Rnds 9-11: K around.

Rnd 12: On needle #1: k10, KFB, k4. On needle #2: k10. On needle #3: k4, KFB, k10. ( 42 sts )

Rnds 13-15: K around.

Rnd 16: On needle #1: k1, KFB, k14. On needle #2: k4, [ KFB ] 2 times, k4. On needle #3: k14, KFB, k1. ( 46 sts )

Rnds 17-19: K around.

Rnd 20: On needle #1: k1, KFB, k15. On needle #2: k5, [ KFB ] 2 times, k5. On needle #3: k15, KFB, k1. ( 50 sts )

## Pantlegs. Worked flat and seamed.

Redistribute sts in order to knit each leg flat.

Turn work so WS is facing.

Row 1 ( WS ): P18 sts, p7 sts from needle #2. ( 25 sts ) Slip remaining 25 sts to a stitch holder.

Row 2 ( RS ): K across.

Rows 3-5: Work in St st.

Row 6 ( RS ): K2tog, k21, ssk. ( 23 sts )

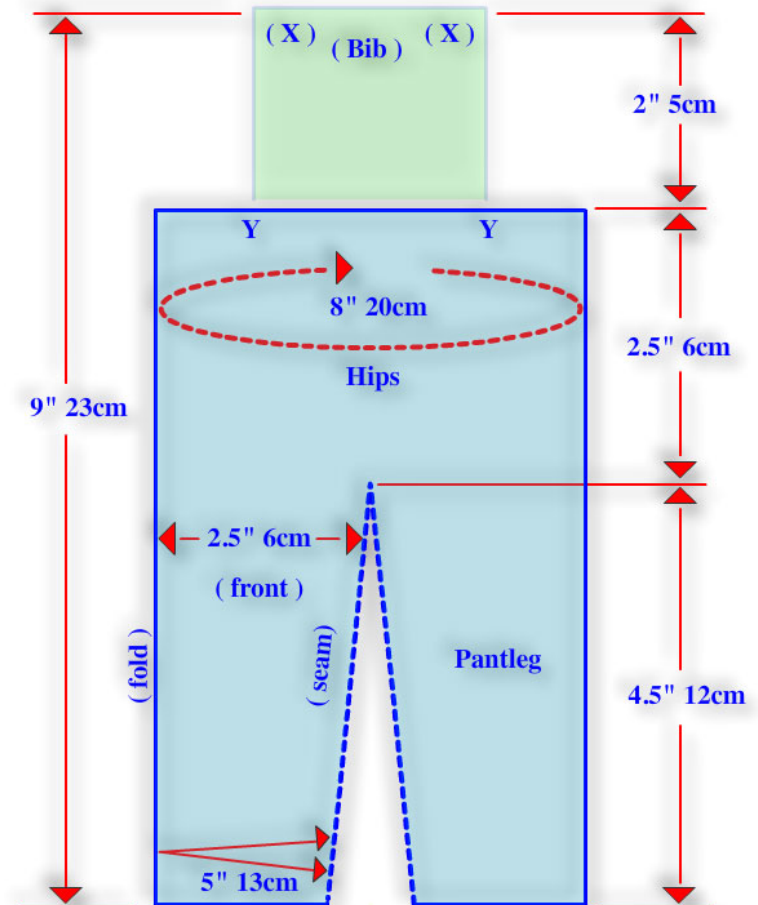
Rows 7-25: Work in St st.

Rows 26-29: K across.

BO. Repeat above for the other leg with sts from holder.

## Finishing

Make 2 straps ( CO 3 sts, k each row for 7 inches ( 18 cm ), BO ). Attach each strap to back waist at Y. Sew snaps at RS corners of bib at X, and on WS of end of each strap. Sew 1/4-inch ( 5-mm ) buttons on RS of each strap end. Sew inseam of both legs. Weave in ends.



( Measurements are approximate.)

## Shirt. Worked flat and seamed.

With circular needle, CO 23 sts.

Row 1 ( RS ): [ K1, p1 ] across, ending with k1.

Row 2 ( WS ): [ P1, k1 ] across, ending with p1.

Row 3 ( RS ): K across.

Row 4 ( WS ): P across.

Rows 5-12: Work in St st. (K the RS rows and P the WS rows).

Row 13 ( RS ): K across, thumb CO 9 sts. ( 32 sts )

Row 14 ( WS ): K1, p across, thumb CO 9 sts. ( 41 sts )

Row 15 ( RS ): K across.

Row 16 ( WS ): K1, p across until last st, k1.

Rows 17-26: Repeat rows 15 and 16.

Row 27 (neck opening): K15, BO 11, k15.

Row 28 ( WS ): K1, p14, thumb CO 11, p14, k1. ( 41 sts )

Row 29 ( RS ): K across.

Row 30 ( WS ): K1, p39, k1.

Rows 31-40: Repeat rows 29 and 30.

Row 41 ( RS ): BO 9 sts, k across. ( 32 sts )

Row 42 ( WS ): BO 9 sts purlwise, p across. ( 23 sts )

Row 43 ( RS ): K across.

Row 44 ( WS ): P across.

Rows 45-52: Work in St st.

Row 53 ( RS ): [ K1, p1 ] across, ending with k1.

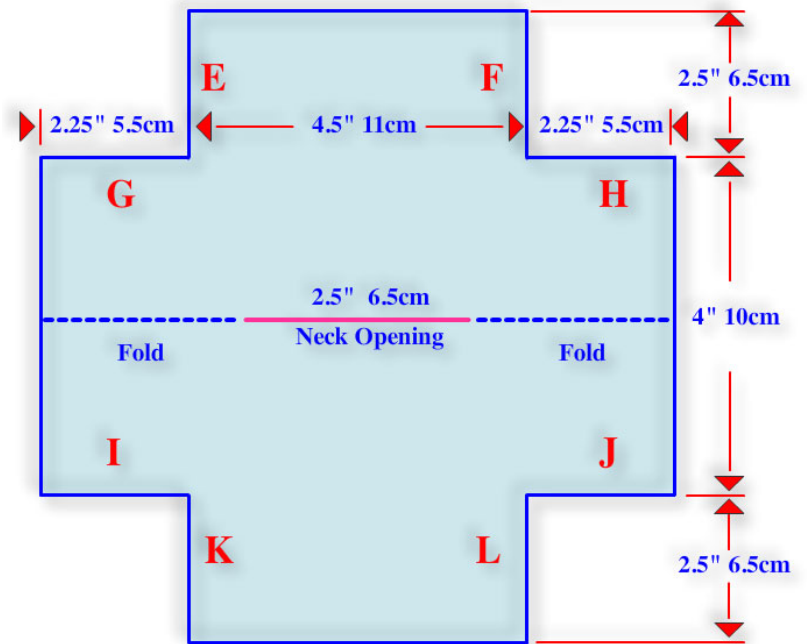
Row 54 ( WS ): [ P1, k1 ] across, ending with p1.

BO in pattern.

## Finishing

Fold shirt in half at neck opening and top of sleeves, with right sides together.

On the wrong side, sew side seams and underarms: E to K, G to I and F to L, H to J ( see diagram ). Weave in ends.



( Measurements are approximate.)

## Hat. Worked flat and seamed.

With circular needle, CO 50 sts.

Row 1 ( RS ): K across.

Rows 2-7: Work in St st ( K the RS rows, P the WS rows ).

Row 8 ( WS ): [ P6, p2tog ] across, p2. ( 44 sts )

Row 9 ( RS ): K across.

Row 10 ( WS ): [ P5, p2tog ] across, p2. ( 38 sts )

Row 11 ( RS ): K across.

Row 12 ( WS ): [ P4, p2tog ] across, p2. ( 32 sts )

Row 13 ( RS ): K across.

Row 14 ( WS ): [ P3, p2tog ] across, p2. ( 26 sts )

Row 15 ( RS ): K across.

Row 16 ( WS ): [ P2, p2tog ] across, p2. ( 20 sts )

Row 17 ( RS ): K across.

Row 18 ( WS ): [ P1, p2tog ] across, p2. ( 14 sts )

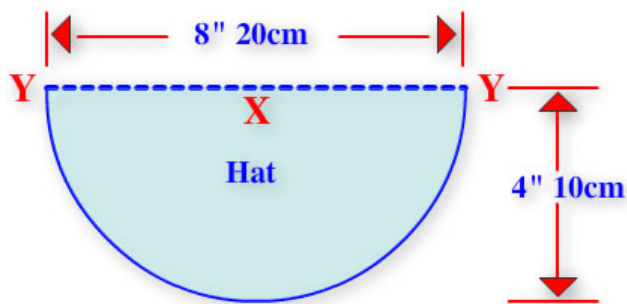
Row 19 ( RS ): K across.

Row 20 ( WS ): P2tog across. ( 7 sts )

Row 21 ( RS ): [ K2tog ] 3 times, k1. ( 4 sts )

### Finishing

Cut yarn tail and pull yarn through remaining stitches. Fold hat in half at X with right sides together. Use yarn tail to sew back-seam edges together, allowing hat brim to roll.



## Shoes. Worked flat until toe, then in the round. Make 2.

With 2 DPNs, CO 12 sts.

Row 1 ( RS ): K across.

Rows 2-7: Work in St st ( K the RS rows, P the WS rows ).

Row 8 ( WS ): P across. Thumb CO 3 sts. ( 15 sts )

Row 9 ( RS ): K across, Thumb CO 3 sts. ( 18 sts )

Row 10 ( WS ): P across.

Row 11 ( RS ): K3, k2tog, k8, k2tog, k3. ( 16 sts )

Row 12 ( WS ): P2, p2tog, p8, p2tog, p2. ( 14 sts )

Row 13 ( RS ): K2, k2tog, k6, k2tog, k2. ( 12 sts )

Switch to 4 DPNs for working the toe in the round. On needle #1: place 3 sts. On needle #2: place 6 sts. On needle #3: place 3 sts. Join rnd.

Rnds 1-2: K around.

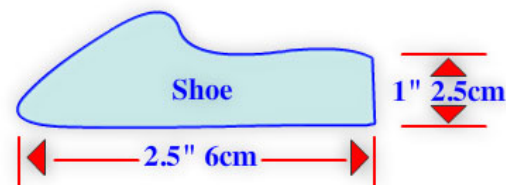
Rnd 3: On needle #1: k1, k2tog. On needle #2: ssk, k2, k2tog. On needle #3: ssk, k1. ( 8 sts )

Rnd 4: K around.

Rnd 5: K2tog around. ( 4 sts )

### Finishing

Cut yarn tail and pull yarn through remaining stitches. With yarn needle bring yarn tail to the WS and fasten. Fold the CO edge in half with right sides together to seam the heel. Add embroidered shoelaces.



( Measurements are approximate.)